



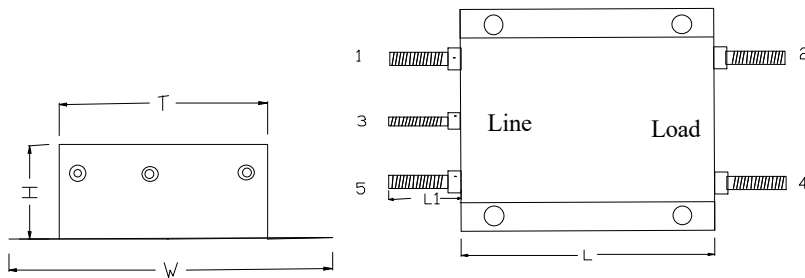
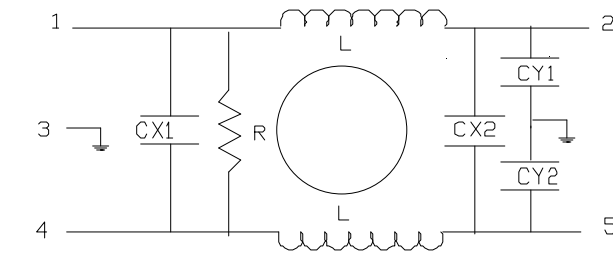
### MAINS FILTERS : 5 WIRE HIGH CURRENT TYPE EMI

[BACK TO INDEX](#)

These are used for suppression of equipment incorporating contacts, brush motors, power controls, electronic switches etc. NB.As with all filters incorporating an earth wire, the maximum earth leakage current permitted must be taken into account.

They are suitable for high current applications.

These filters are well suited for use with Parallel connected surge protection devices which may be able to be replaced without replacing the mains filter



#### TECHNICAL DATA

Manufacturing Standard

Manufactured to BS613

**1: RATED VOLTAGE**

250 V.A.C 50/60 Hz

**2.:RATED CURRENT**

Referred to 50Hz

**3: RATED INDUCTANCE**

Measured at 1Khz at 25° C

#### DIMENSIONS

Rated Current Amps	L	W	H	T	F	Bolts	Hous- ing	Stock Code
40	113	76	35	62	9	M6	MB3	41/105
60								41/106
80								41/107
100	120	130	50	100	15	M8	MB4	41/108