

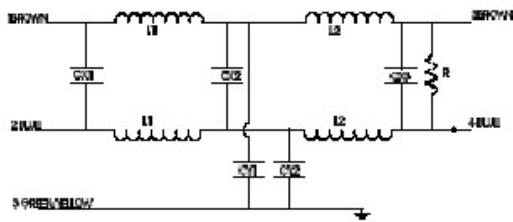
MAINS FILTERS : 5 WIRE HIGH PERFORMANCE TYPE EMH

[BACK TO INDEX](#)

These are used for high performance suppression of equipment incorporating contacts, brush motors, power controls, electronic switches etc. NB.As with all filters incorporating an earth wire, the maximum earth leakage current permitted must be taken into account.

Due to the double section network , as well as the use of double separated metal case housing this unit has a wide band attenuation for Radio frequencies.

These filters are well suited for incorporation into plug in type surge protection units with single or multiple outlets with the addition of suitable series or parallel connected surge protection units due to the fact that they may then be able to be replaced without replacing the mains filter



TECHNICAL DATA

Manufacturing Standard

Manufactured to BS613

1: RATED VOLTAGE

250 V.A.C 50/60 Hz

2.:RATED CURRENT

Referred to 50Hz

3: RATED INDUCTANCE

Measured at 1Khz at 25° C

DIMENSIONS

Rated Current Amps	L	W	H	T	F	Housing	Stock Code
5	82	73	29	53	9	MB1	41/100
10	101	77	31	58	9	MB2	41/101
15	101	77	31	58	9	MB2	41/512
20	101	77	31	58	9	MB2	41/102
25	116	77	37	62.5	9	MB3	41/103
30	116	77	37	62.5	9	MB3	41/104