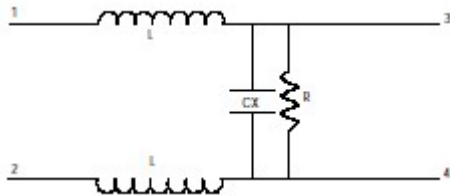


MAINS FILTERS 4 WIRE SINGLE SECTION TYPE EMG

[BACK TO INDEX](#)

For use in equipment that is not earthed



TECHNICAL DATA

Manufacturing Standard
 Manufactured to BS613

1: RATED VOLTAGE

250 V.A.C 50/60 Hz

2.:RATED CURRENT

Referred to 50Hz

3: RATED INDUCTANCE

Measured at 1Khz at 25° C



Rated Current Amps	Inductance mh	Enclosure	X Capacitor	Code	Remarks
3	2x 2.39	B2	0.22	41/370	With Q.C Terminals
5	2x .68	B2	0.47	41/418	
5	2x.27	Sleeved	0.1	41/400	High Frequency Inductors