

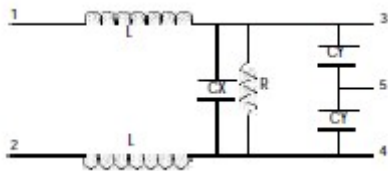


MAINS FILTERS : 5 WIRE SINGLE SECTION TYPE EMF

[BACK TO INDEX](#)

These are used for normal suppression of equipment incorporating contacts, brush motors, power controls, electronic switches etc. NB. As with all filters incorporating an earth wire, the maximum earth leakage current permitted must be taken into account.

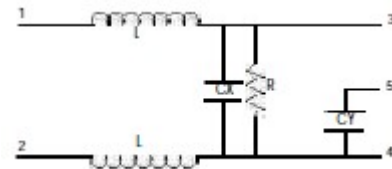
5 Wire with Two “Y” Capacitors



TECHNICAL DATA
 Manufacturing Standard
 Manufactured to BS613
1: RATED VOLTAGE
 250 V.A.C 50/60 Hz
2.:RATED CURRENT
 Referred to 50Hz



5 Wire with One “Y” Capacitors



Rated Current Amps	Inductance m.h	Enclosure	X Cap	Y Cap	Earth Leakage m.a	Code	Remarks
1	13	B2	0.47	2x 0.0047	0.35	41/388	For Switch Mode Power Supplies
1	13	B2	0.22	1x 0.0047	0.35	41/269	
3	.587	I1	0.1	1x 0.0047	0.35	41/236	Without Resistor
3	2.39	I3	0.1	2x 0.0047	0.35	41/290	
3	2.39	B2	0.22	1x 0.01	0.75	41/234	
3	2.39	B2	0.47	1x 0.01	0.75	41/246	
5	0.68	B2	0.33	1x0.0047	0.35	41/137	
5	0.68	B2	0.33	1x0.01	0.75	41/150	
6	0.68	B2	0.22	1x0.01	0.75	41/147	
6	1.5	31-49	0.1	2x 0.0033	0.25	41/612	
6	1.5	31-37	0.22	2x 0.0033	0.25	41/461	With Q.C Terminals and Ring Terminal
10	1.247	44-76	0.47	1x 0.01	0.75	41/252	For Ridge Power Tools
13.5	1.086	44-76	0.33	1x 0.01	0.75	41/152	
16	0.67	48-91	0.47	2x 0.022	1.7	41/334	
20	4.0	48-91	0.33	2x 0.033	2.5	41/579	Very High Attenuation High Performance Filter.
25	0.448	48-91	2x 1.0	2x 0.022	1.7	41/374	5 Wire with 2 of X Capacitors
25	0.448	48-91	2x 1.0	2 x 0.022	1.7	41/374A	Different Wire Lengths